



Product Catalogue

Official UAE Distributor for Centre Tank Services Ltd, UK -
A leading supplier of quality storage tank and fuel dispensing
equipment from quality brands.

CTS
CENTRE TANK
SERVICES LTD

OFFICIAL
DISTRIBUTOR



ANY FLUID

CTS Mains Multi-Zone Tank Alarm

Multi
ZONE

Electric
POWER

- › Mains multi-zone tank alarm for alerting of a combination or all of the following states: high, low and/or bund of a double walled tank
- › 90db sounder and flashing orange strobe to warn of a problem
- › Zone in question lights up on screen to indicate activated state
- › Test and alarm mute functions
- › Automatically reversed float logic for low zones
- › Weatherproof IP55 enclosure
- › Standard box with multiple input voltages 110v/230v, 12v/24v DC
- › Option with relays to connect to external equipment e.g. other alarms or building management systems for remote monitoring
- › Version with relays can be used to control the pump. E.g. where a day tank fills a larger tank, it can automate pump to run when tank contents drops to set low level, and turns pump off at set high level
- › **Please note: If your configuration is not listed below, select the box only & the probes you need from page 5**

Code	Description	V	Probes	Relays	Zone	Fluids
SWS2000	Mains Multi-Zone Alarm Box Only	110/230/12v/24v			Multi - High/Low/Bund	AF
SWS2001	Mains Multi-Zone Alarm Box Only c/w Relays	110/230/12v/24v		3	Multi - High/Low/Bund	AF
SWS2009	Mains Multi-Zone Alarm Box c/w Single Probe & Relays	110/230/12v/24v	Single*	3	Multi - High/Low/Bund	D O H&G
SWS2010	Mains Multi-Zone Alarm Box c/w Single and Double Probe & Relays	110/230/12v/24v	Single & Double*	3	Multi - High/Low/Bund	D O H&G

*95m max. probe length. **Please note:** all cables must be free of electrical noise.



ANY FLUID

CTS Battery Multi-Zone Tank Alarm

Multi
ZONE

Battery
POWER

- › Battery multi-zone tank alarm for alerting of a combination or all of the following states: high, low and/or bund of a double walled tank
- › For isolated/mobile installations where mains power is unavailable
- › 90db sounder and flashing red LED to warn of a problem
- › Zone in question lights up on screen to indicate activated state
- › Test, alarm mute & low battery functions. Will beep once a minute
- › Automatically reversed float logic for low channels
- › Weatherproof IP55 enclosure
- › Option with relays to connect to external equipment e.g. other alarms or building management systems for remote monitoring
- › Versions with relays available
- › **Please note: If your configuration is not listed below, select the box only & the probes you need from page 5**

Code	Description	Batteries	Probes	Relays	Zone	Fluids
SWS1000	Battery Multi-Zone Alarm Box Only	6 x AA			Multi - High/Low/Bund	AF
SWS1001	Battery Multi-Zone Alarm Box Only c/w Relays	6 x AA		3	Multi - High/Low/Bund	AF
SWS2011	Battery Multi-Zone Alarm Box c/w Single Probe & Relays	6 x AA	Single*	3	Multi - High/Low/Bund	D O H&G
SWS2012	Battery Multi-Zone Alarm Box c/w Single and Double Probe & Relays	6 x AA	Single & Double*	3	Multi - High/Low/Bund	D O H&G

*45m max. probe length. **Please note:** all cables must be free of electrical noise.

ANY FLUID

CTS Economy Tank Level Alarm

- › An economical, entry level tank alarm solution if only one level alert is required
- › Can be used to indicate that the tank level has reached either a high or low state depending upon requirements
- › Battery powered for use on portable installations or sites where mains power is inaccessible
- › Flashing red LED & 90db alarm will sound to alert the user that the set level has been reached
- › Test & alarm mute functions
- › Weatherproof IP55 enclosure with 4 external mounting lugs
- › Simple operation means battery will last in excess of 72 hours in full alarm mode, making it ideal for sites not always manned
- › Version available with 5m diesel/oil probe and version without for use with other fluids (select other fluid probe from page 5)
- › c/w 3 cut to size stickers to name the LED – 2 labelled high & low and 1 blank to name it something else with permanent marker

Code	Description	Battery	Probe	Zone	Fluids
SWS1024	Economy Tank Level Alarm c/w Probe	1 x PP3	✓*	Single - High or Low	D O H&G
SWS1022	Economy Tank Level Alarm Only	1 x PP3		Single - High or Low	AF

*25m max. probe length. **Please note:** all cables must be free of electrical noise.

D DIESEL O OIL HVO & GTL

CTS Economy Bund Alarm

- › An economical, entry level tank alarm c/w 5m single probe to alert of presence of fluid in the bund of a double walled tank
- › Simple & cost effective solution if only bund alert is required
- › Used to indicate either the inner tank leaking into the bund or excess rain water and debris that has built up
- › Battery powered for use on portable installations or sites where mains power is inaccessible
- › Flashing red LED & 90db alarm will sound to alert the user to a problem
- › Test & alarm mute functions
- › Weatherproof IP55 enclosure with 4 external mounting lugs
- › Simple operation means battery will last in excess of 72 hours in full alarm mode, making it ideal for sites not always manned
- › Suitable for use with diesel and light oils

Code	Description	Battery	Probe	Zone	Fluids
SWS1019	Economy Bund Alarm	1 x PP3	✓*	Single - Bund	D O H&G

*25m max. probe length. **Please note:** all cables must be free of electrical noise.



Single
ZONE

Battery
POWER



Single
ZONE

Battery
POWER



Sophisticated tank monitoring when only one alert is required with the Single Zone Alarm



Single
ZONE

**Mains/
Battery**
POWER



Using the single zone alarm as a remote warning device

- › The mains powered versions of the single zone alarm come with a relay to allow you to connect it to a single relay on another alarm as a remote warning device.
- › The second alarm can be positioned 100m away from the other, inside the office for example, meaning that you don't have to be in sight/ear shot of the tank to be alerted to the problem.
- › The two alarms will act independently from one another meaning that if one of them is muted, the other will continue to sound until it is muted or the zone is inactivated i.e. the problem is solved.

CTS Single Zone Tank Alarm

Designed for when only one alert is required, the CTS Single Zone Tank Alarm is a more sophisticated and flexible alternative to the Economy tank alarm models on the previous page.

It can be used to identify and warn of either a high level, low level or fluid in the bund of a double walled tank. Once activated, the alarm will sound as well as display the name of the activated tank state on the descriptive red LED text display, so that the user can clearly see what the problem is.

Features...	
›	Single zone tank alarm to warn of either a high level, low level or fluid in the bund of a double walled tank depending upon the users' requirements
›	90db sounder & descriptive red LED text display to clearly warn of what the activated tank state is so that the user knows how to take action
›	Test & alarm mute functions
›	Automatically reversed float logic for low zones so that it is ready for use again once the fluid level has increased
›	Weatherproof IP55 enclosure with 4 external mounting lugs
›	Mains and mains with battery back up versions available for the event of a power cut
›	Mains versions c/w relay for connecting to external equipment e.g. another alarm or a BMS for remote monitoring of the tank situation
›	Available with 5m fuel probe or without for use with other fluids (select other fluid probe from page 5)

Code	Description	Power	Probe	Relay	Zone	Fluids
SWS2002	Mains Single Zone Tank Alarm c/w Probe	230v	✓	✓	Single - High or Low or Bund	D O HSG
SWS2003	Mains Single Zone Tank Alarm Battery Back-up c/w Probe	230v	✓	✓	Single - High or Low or Bund	D O HSG
SWS2004	Mains Single Zone Tank Alarm Only	230v		✓	Single - High or Low or Bund	AF
SWS2007	Mains Single Zone Tank Alarm Battery Back-up Only	230v		✓	Single - High or Low or Bund	AF
SWS1009	Alarm Cable Per Metre for Remote Installation					AF

*25m max. probe length. **Please note:** all cables must be free of electrical noise.



CTS ATEX Approved Tank Alarm

- › ATEX approved tank alarm for alerting of a high fluid level and fluid within the bund of a double walled tank which may indicate a leak or rain water ingress
- › Battery powered for use on portable installations or sites where mains power is inaccessible
- › Flashing red LED & 95db alarm will sound to alert the user
- › Siren will sound continuously for 120 seconds followed by a periodic beep for 60 minutes
- › Alarm automatically cancels when the zone is deactivated
- › Test battery, test alarm & alarm cancel functions
- › IP65 metal enclosure
- › ATEX approved for Zone 1 II2G Ex ia IIB T4 Gb
- › Version with 5m probe for use with diesel, kerosene and JET A1
- › Version without probe for use with other fluids such as petrol using a third party ATEX probe with solid stem



Two
ZONE

Battery
POWER



Code	Description	Battery	Probe	Zone	Fluids
SWS2006	ATEX Tank Alarm c/w Probe	AAA	✓*	Two - High and Bund	D K J HSG
SWS3023	ATEX Tank Alarm Only	AAA		Two - High and Bund	AF**

*5m max. probe length. **Depending upon compatibility of third party probe used **Please note:** all cables must be free of electrical noise.



Fuel Tank Alarm Probes

The CTS fuel tank alarm probes are designed for use with the industry renowned CTS alarms to accurately detect and alert the user of one, a combination, or all of the following tank states:

- › **High fuel level** to help avoid further filling of the tank and an overflow from occurring
- › **Low fuel level** to indicate that stock is running out and a fuel delivery needs to be ordered
- › **Bund alert** to warn that fluid is present in the bund compartment of a double walled tank which may indicate a leak or rain water ingress
- › As standard, these probes are designed for installation onto steel tanks, for plastic tanks the plastic tank kit is also required

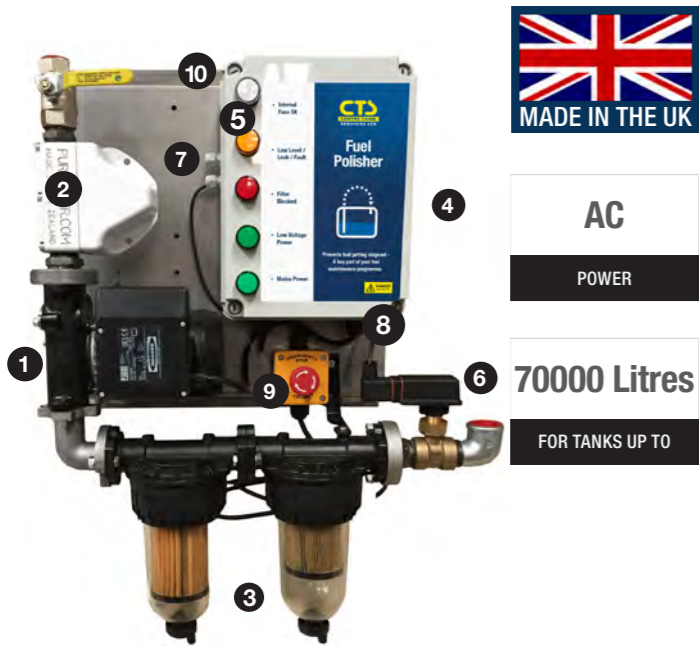


**Single/
Double**
PROBES



Code	Description	Alerts	Construction	Cable	Temp	Connection	Fluids
SWS1035	Single Fuel Tank Alarm Probe	High or Low or Bund	Buna, nylon & stainless steel	5m PVC	-20°C/+80°C	1 1/2" F BSP Brass Cap	D O HSG
SWS1035/9	9m Single Probe For Larger Tanks	High or Low or Bund	Buna, nylon & stainless steel	9m PVC	-20°C/+80°C	1 1/2" F BSP Brass Cap	D O HSG
SWS1035/2	Double Fuel Tank Alarm Probe	High & Low	Buna, nylon & stainless steel	5m PVC	-20°C/+80°C	1 1/2" F BSP Brass Cap	D O HSG
SWS1035/2/9	9m Double Probe For Larger Tanks	High & Low	Buna, nylon & stainless steel	9m PVC	-20°C/+80°C	1 1/2" F BSP Brass Cap	D O HSG
SWS1036	Plastic Tank Kit - For Single Probe						AF
SWS1037	Plastic Tank Kit - For Double Probe						AF
SWS1009	Alarm Cable Per Metre			1m PVC			AF

Prevent fuel from getting stagnant & avoid costly damage with the CTS Fuel Polisher



AC
POWER

70000 Litres
FOR TANKS UP TO



CTS Fuel Polisher

This unit is designed to prevent fuel inside a storage tank from getting stagnant - particularly those with low usage such as generator back up tanks, that whilst not used often are of high importance. By keeping it free of contaminants, damage and downtime to equipment and vehicles the fuel passes through is avoided.

The system draws the fuel up from the front of the tank through the magnetic conditioner, keeping any bacteria microbes dormant, and then through a two stage water and particle filtration process. The fuel is then circulated back into the rear of the tank.

Benefits...

- Italian manufactured Piusi Panther pump for long, trouble free service life.
- Purafiner magnetic fuel conditioner to break up any bacteria growth and prevent filter blockages.
- Two stage Piusi filtration with bowls to observe and drain any contamination – 30 micron water & particle and 5 micron final finishing particle filter.
- Internal timer to control the period that the fuel is circulated. This is set as standard to turn over 1.5x the tank capacity every 28 days (the period that it takes for bacteria colonies to form).
- IP55 rated control panel with large, coloured lights for diagnosing any issues that need to be dealt with i.e. Filter blocked and low level/leak/fault.
- If the flow switch detects a filter blockage, the filter light on the control panel will illuminate and the pump will turn off until the filter is replaced.
- Input for an alarm/gauge to detect a low level, and a leak probe for a drip tray (if installed). Light illuminates if activated and the pump turns off until action is taken.
- Two passive BMS outputs for the remote warning of filter block and low level/leak/fault to alert the user that they need to take action.
- Mushroom style emergency stop button to allow the immediate stop of pump functions by anyone.
- Plated for sturdy fixing to a metal fuel tank or cabinet.

Accessories...



WATCH

How diesel bugs become a problem and how the Fuel Polisher can help...



★ ENQUIRE NOW FOR OTHER FILTRATION OPTIONS

Code	Description	Max Tank Capacity (l)	Max Turnover Per Day (l)	V	Pump	Micron	Fluids
CTS1033	Fuel Polisher 40,000l Tanks	40,000	3000	230	Panther 56	Water - 30 / Particle - 5	D H&G
CTS1048	Fuel Polisher 70,000l Tanks	70,000	4000	230	Panther 72	Water - 30 / Particle - 5	D H&G
F00611040	Replacement Water/Particle Element					30	D H&G
F00611030	Replacement Particle Element					5	D H&G



Piusi Clear Captor

- Particle only and water & particle versions available
- Clear bowl containing paper or steel cartridge with drain port for easy removal of filtered impurities and easy visual inspection
- Can be fitted to the suction or delivery of a pump installation
- Complete kits contain two elements & one head (paper versions), and one element & one head (steel mesh version)
- Supplied in a point of sale display box



5-125µ

MICRON

100lpm

MAX FLOW RATE



Code	Description	Micron	Max Flow Rate (lpm)	Max Bar	Inlet/Outlet	Spare Element	Spare Head	Fluids
F00611B00	Piusi Clear Captor Particle Only	5µ	100	5	1" F BSP Flanged	F00611030	F15744000	D B2 H&G
F00611B10	Piusi Clear Captor Water & Particle	30µ	70	5	1" F BSP Flanged	F00611040	F15744000	D B2 H&G
F00611B60	Piusi Clear Captor Steel Mesh Particle	125µ	100	5	1" F BSP Flanged	F00611060	F15744000	D B2 H&G



Piusi Particle Filter

- Particle only filter with resin coated paper element for removing debris out of fuel
- Spin-on cartridge for easy replacement once full
- Can be fitted to the suction or delivery of a pump installation
- Different flow rate versions depending upon requirements
- Complete kit contains one element & one head
- Element thread part code: 611000 - 3/4" F BSP
F09359000 - 1/4" F BSP



10µ

MICRON

100lpm

MAX FLOW RATE



Code	Description	Micron	Max Flow Rate (lpm)	Max Bar	Inlet/Outlet	Spare Element	Spare Head	Fluids
F0777200A	Piusi Particle 60lpm CF60	10µ	60	12	1" F BSP Flanged	611000	F14528000	D O P B2 H&G
F09149000A	Piusi Particle 100lpm CF100	10µ	100	12	1" F BSP Flanged	F09359000	CTH1813	D O P B2 H&G



Piusi Water Captor

- Water & particle filter with resin coated paper element for removing water & debris out of fuel
- Spin-on cartridge for easy replacement once full
- Can be fitted to the suction or delivery of a pump installation
- Different flow rate versions depending upon requirements
- 70lpm kit contains two elements, 150lpm contains one element
- Element thread part code: F00611010 - 1"-12 UNF
F00611020 - 1 1/2"-16 UNF



30µ

MICRON

150lpm

MAX FLOW RATE



Code	Description	Micron	Max Flow Rate (lpm)	Max Bar	Inlet/Outlet	Spare Element	Spare Head	Fluids
F00611A00	Piusi Water Captor 70lpm CF70-30	30µ	70	3.5	1" F BSP Flanged	F00611010	CTH1801	D P H&G
F00611A10	Piusi Water Captor 150lpm CF150-30	30µ	150	3.5	1" F BSP Flanged	F00611020	CTH1813	D P H&G





AFRISO

D DIESEL **K** KEROSENE **B1** B100 **AB** ADBLUE® **W** WATER **HVO & GTL**

Unitel Hydrostatic Gauge

%
READING

+/-3%
ACCURACY

- › Pneumatic tank gauge with spring loaded plunger to pull & release to show current tank contents
- › Mechanical display showing tank contents as a percentage
- › Fully adjustable between diesel tank heights of 1200mm-3000mm and up to 2500mm for AdBlue® and water tanks
- › Accuracy of +/-3% at full scale
- › Dual scale for horizontal or vertical, rectangular & cylindrical tanks
- › Adjustable second needle for setting the level parameter for when you need to reorder fuel
- › Gauge face dimensions 145mm x 135mm

Code	Description	Reading Type	Tank Height (mm)	Capillary	Balance Chamber Tank Fitting	Balance Chamber Weight	Working Temp	Fluids
OAB9000	Unitel Gauge	0-100%	1200-3000*	20m PVC	½" M BSP & 1" M BSP	Stainless Steel	-5°C/+55°C	D K B1 AB W H&G
OAB9004	Unitel Condensation Trap							D K B1 AB W H&G
CTS2122	30m Capillary Tube Extension Kit			30m PVC				D K B1 AB W H&G

*For AdBlue® tanks max height is 2500mm



AFRISO

D DIESEL **K** KEROSENE **B1** B100 **HVO & GTL**

MTF 2000 Float Gauge

0-100%
READING

Adjustable
TANK HEIGHT

- › Cost effective, universal float operated clock gauge for the quick & clear identification of tank contents
- › Small mechanical display showing percentage of contents remaining in the tank
- › Fully adjustable between tank heights of 900mm-2000mm so only one model needs to be stocked
- › Gauge can be directly mounted onto 1 ½" & 2" F BSP threads for flexibility of installation
- › Brass and nickel silver movement
- › Long service life
- › Popular choice for heating oil tanks

Code	Description	Reading Type	Tank Height (ft/mm)	Gauge Fitting	Fluids
OAB3320	MTF 2000 Float Gauge	0-100%	3'0/904 to 6'7/2000	1 ½" & 2" M BSP	D K B1 H&G

D DIESEL **W** WATER **HVO & GTL**

Piusi Ocio Fuel Tank Gauge

- › Industry known, continuous reading, hydrostatic tank contents gauge for commercial fuel tanks
- › Digital display reading in percentage, level (mm) or volume (litres)
- › Accuracy of +/-1% at full scale and can easily be calibrated on site
- › Low & high level alerts can be set up with flashing LED screen
- › c/w two configurable relays for connecting to other equipment e.g. a low/high level alarm for audible warning or to automate a pump to run when the tank contents drop to the set low level, and then turn the pump off when the set high level is reached
- › Supplied with 10m of capillary, but can work up to 50m away
- › 4-20ma version to send readings to building management systems and has the ability to show you the available space left in the tank
- › Tank shapes - vertical cylindrical, horizontal cylindrical & rectangular

Code	Description	Reading Type	Tank Height (mm)	Capillary Length (m)	Balance Chamber Tank Fitting	Balance Chamber Weight	Working Temp	Fluids
F0075510D	Ocio 230v	0-100% mm/inches litres/gals	600-4000	10	½" M BSP	Brass	-20°C/+50°C	D W H&G
F00755160	Ocio 230v 4-20ma	0-100% mm/inches litres/gals	600-4000	10	½" M BSP	Brass	-20°C/+50°C	D W H&G

D DIESEL **K** KEROSENE **HVO & GTL** **HFO** HEAVY FUEL **B1** B100 **OTHER FLUIDS**

Tankmate® Gauge

- › Hydrostatic single or dual scaled calibrated tank gauge with capsule type movement for constant remote contents indication
- › Large mechanical display calibrated to show volume in litres* - other reading options available on request
- › Suitable for tanks between 600mm and 10m height or diameter depending on the density of the liquid being measured
- › Can be positioned up to 100m away from the tank
- › Designed for tank lid or man hole fitting, requiring a 180mm opening for the transmitter
- › Mild steel internally mounded transmitter with nitrile rubber airbag, nylon capillary tubing, push fit connector and lowering cable
- › 150mm wall mounted stainless steel case with glass window and 3-hole back flange
- › Version available with external transmitter
- › **Please request questionnaire or download from the website**

Code	Description	Reading Type	Max. Tank Height	Capillary	Tubing Kit	Internal Transmitter	Fluids
OAB9008	Afriso Tankmate® 160 Gauge	Litres*	10m	30m Nylon Tubing	Dual Thread Tank Connector	Mild Steel	D K H&G HFO B1 DF

PIUSI

%/Litres/mm
READING

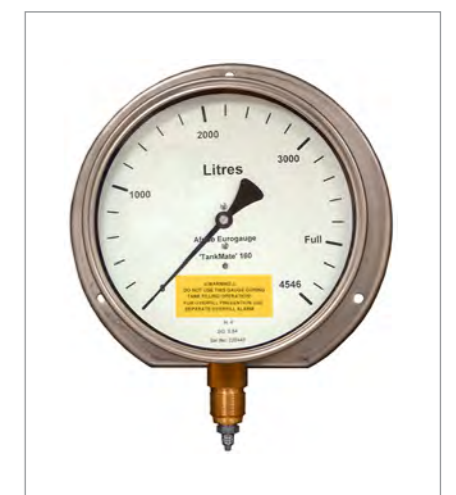
+/-1%
ACCURACY



AFRISO

Litres*
READING

Up to 10m
TANK HEIGHT





Piusi Panther 56/72

72lpm
MAX FLOW RATE

AC
POWER

- › Market leading, self priming rotary vane pump for diesel refuelling
- › Sintered steel rotor and acetal resin vanes
- › Compact cast iron pump body with anti-corrosion paint
- › Mechanical seal for reliability even at low temperatures
- › Integrated bypass valve & 500µ filter accessible for easy cleaning
- › Induction motor with aluminium casing and mounting feet
- › Protection grade: IP55
- › Noise level below 75db
- › Continuous running in open flow
- › Thermal motor overload

Code	Description	On/Off Switch	Max Flow Rate (lpm)	V	Hz	Amps	Watts	Ports	Fluids
730000	Panther 56 230v/50Hz	✓	56	230	50	3	600	1" F BSP	D H&G
732000	Panther 72 230v/50Hz	✓	72	230	50	4.2	500	1" F BSP Flanged	D H&G



Piusi E80/120/140

140lpm
MAX FLOW RATE

AC
POWER

- › Powerful, self priming rotary vane pump for high flow diesel transfer
- › Sintered steel rotor and acetal resin vanes
- › Cast iron pump body with anti-corrosion paint
- › Integrated bypass valve and Viton lip seal
- › Induction motor with aluminium casing and mounting feet
- › Protection grade: IP55
- › Noise level below 70db
- › Continuous running in open flow
- › Thermal motor overload
- › E140 suction hose must be 1½" and delivery hose 8m max.
- › **Please note: E140 has opposite flow direction from E80/120**

Code	Description	On/Off Switch	Max Flow Rate (lpm)	V	Hz	Amps	Watts	Weight	Ports	Fluids
305000	E80 230v/50Hz	✓	75	230	50	3.5	700	13 kg	1" F BSP Flanged	D H&G
F00326110	E120 240v/50Hz	✓	100	240	50	4.5	950	16 kg	1" F BSP Flanged	D H&G
F00395050	E140 230v/50Hz	✓	140	230	50	5	1150	25 kg	1 ½" F BSP Inlet / 1" F BSP Outlet	D H&G



Piusi E300



550lpm
MAX FLOW RATE

AC
POWER

- › Electric rotary vane pump designed for high flow diesel applications where large volumes need to be transferred
- › Popular for decanting diesel from one tank to another
- › Sturdy cast iron body for heavy duty use
- › Cast iron open impeller
- › Ceramic and graphite shaft seal
- › Self-priming once it has been initially primed
- › Incorporated check valve in the suction port to prevent the siphoning effect & ensure automatic re-priming
- › Protection grade: IP55
- › Continuous running in open flow
- › **Please note: This pump requires 2" suction**



Code	Description	Max Flow Rate (lpm)	V	Amps	Watts	Ports	Fluids
F00321000	Piusi E300	550	230	9.2	1500	2" F BSP	D H&G



Semi-Rotary Hand Pump

400ml per rev
MAX FLOW RATE

Lugs
MOUNTING

- › Cast iron constructed semi-rotary vane pump
- › Cost effective solution for dispensing or transferring of diesel fuel
- › HD wooden/cast spindle handle with large wall thickness
- › Backplate lugs for mounting
- › Removable inlet/outlet flanges
- › Replaceable gland packing for easy maintenance
- › Range of other size and flow rate versions available depending upon individual requirements (bronze model for water on request)



Code	Description	Max Flow Rate (per rev)	Material	Suction Inlet	Outlet	Mounting	Fluids
CTS5002	K2 Green Semi Rotary Pump	400ml	Cast Iron	1" F BSP Flanged	1" F BSP Flanged	Backplate lugs	D H&G



PIUSI

D DIESEL **P** PETROL **K** KEROSENE **J** JET FUEL **HVO & GTL**

Piusi EX50 ATEX Fuel Pump

50lpm
MAX FLOW RATE

AC
POWER

- › Compact self priming rotary vane pump for the dispensing of fuel in potentially explosive applications
- › Suitable for diesel, petrol, kerosene, AVGAS, AVJET, Aspen 2 & 4
- › For refilling vehicles, golf buggies & mowers in Zone 1 environments
- › Sintered steel rotor, technopolymer vanes & integrated bypass valve
- › Cast iron pump body with anti-corrosion resistant paint
- › ATEX certified: II2G Ex d II A T4 Gb
- › Protection grade: IP55
- › Thermal motor protection

Code	Description	Max Flow Rate (lpm)	V	Hz	Amps	Duty (mins)	Ports	Pump On/Off	Drum Connector	Fluids
F00373000	EX50 230v	50	230	50/60	1.2	30 on / 30 off	1" F BSP Flanged	Lever		D P K J HSG



PIUSI

D DIESEL **P** PETROL **K** KEROSENE **J** JET FUEL **HVO & GTL**

Piusi EX100 ATEX Fuel Pump

100lpm
MAX FLOW RATE

AC
POWER

- › Heavy duty, self priming rotary vane pump for high flow fuel dispensing in potentially explosive applications
- › Suitable for diesel, petrol, kerosene, AVGAS, AVJET, Aspen 2 & 4
- › For fast refilling large vehicles & machinery in Zone 1 environments
- › Sintered steel rotor, technopolymer vanes & integrated bypass valve
- › Cast iron pump body with anti-corrosion resistant paint
- › ATEX certified: II2G Ex d II A T4 Gb
- › Protection grade: IP55
- › Continuous running in open flow (1.5" suction, max 8m del. hose)
- › Thermal motor protection
- › **Please note: EX100 has opposite flow direction from standard Piusi ATEX pumps such as the EX50.**

Code	Description	On/Off Switch	Max Flow Rate (lpm)	V	Hz	Amps	Watts	Weight	Ports	Fluids
F00390010	EX100 230v/50Hz	✓	100	230	50	4.5	1035	25 kg	1 ¼" F BSP Inlet / 1" F BSP Outlet	D P K J HSG

0
OIL

Piusi Viscomat Vane

- › Electric vane pump for transferring oils & lubricants at higher flow rates
- › Sintered steel rotor, acetal resin vanes & viton lip seal
- › Integrated adjustable bypass valve (only on Viscomat 70)
- › Suitable for continuous running in open flow situations
- › Smooth flow, high suction capacity & low noise level
- › Maximum fluid temperature of +70°C
- › Viscosity up to 500cSt (check oil viscosity at lowest temperature in use)
- › Protection grade: IP55
- › Available in a range of voltages and flow rates

PIUSI

50lpm
MAX FLOW RATE

AC
POWER



Code	Description	On/Off Switch	Max Flow Rate (lpm)	V	Hz	Amps	Watts	Pressure (bar/psi)	Ports	Fluids
F0033414A	Viscomat 70M 240v	✓	25	240	50	4.5	950	9/130	1" F BSP	0
303M00	Viscomat 90M 230v	✓	50	230	50/60	6.5	1350	5/72	1" F BSP	0

0
OIL

Piusi Viscomat Gear

- › Electric gear pump for transferring oils & lubricants at higher pressures
- › Aluminium body, sintered steel gears & NBR 902 lip seal
- › Integrated adjustable bypass valve & self priming device
- › Suitable for continuous running in open flow situations
- › Smooth flow, high suction capacity & low noise level
- › Maximum fluid temperature of +70°C
- › Viscosity from 50-2000cSt (check oil viscosity at lowest temperature in use)
- › Protection grade: IP55
- › Available in a range of voltages and flow rates

PIUSI

14lpm
MAX FLOW RATE

AC
POWER



Code	Description	On/Off Switch	Max Flow Rate (lpm)	V	Hz	Amps	Watts	Pressure (bar/psi)	Ports	Fluids
304030	Viscomat 200/2M	✓	9	230	50	3.8	800	12/174	1" F BSP	0
304300	Viscomat 230/3M	✓	14	230	50	6	1250	12/174	1" F BSP	0
304010	Viscomat 350/2M	✓	9	230	50	6	1200	25/362	1" F BSP	0



D DIESEL **HVO & GTL**

Piusi K33 Flow Meter

20-120lpm

FLOW RATE RANGE

+/-1%

ACCURACY

- › Polybutylene nutating disk meter with mechanical display to measure the quantity of fuel that has been dispensed
- › Suitable for pump & gravity installations
- › Meter body can be rotated to allow flow from 4 directions for flexible installation
- › Easy to install and calibrate if required
- › +/-1% accuracy after calibration
- › 3 digit resettable & 6 digit non-resettable totaliser
- › Working temperature -20°C/+60°C

Code	Description	Flow Rate (lpm)	Pressure (bar/psi)	Inlet	Outlet	Totaliser	Fluids
553000	K33 Diesel	20-120	3.5/50	1" F BSP	1" F BSP	0.1 to 999.9 Resettable	D H&G



D DIESEL **HVO & GTL**

Piusi K44 Flow Meter

20-120lpm

FLOW RATE RANGE

+/-1%

ACCURACY

- › Polybutylene nutating disk meter with mechanical display to measure the quantity of fuel that has been dispensed
- › Suitable for pump & gravity installations
- › Meter body can be rotated to allow flow from 4 directions for flexible installation
- › Easy to install and calibrate if required
- › +/-1% accuracy after calibration
- › 4 digit resettable & 7 digit non-resettable totaliser
- › Working temperature -20°C/+60°C

Code	Description	Flow Rate (lpm)	Pressure (bar/psi)	Inlet	Outlet	Totaliser	Fluids
563000	K44 Diesel	20-120	3.5/51	1" F BSP	1" F BSP	0.1 to 9999.9 Resettable	D H&G

D DIESEL **HVO & GTL**

Piusi K150 Flow Meter



25-150lpm

FLOW RATE RANGE

+/-1%

ACCURACY

- › Polybutylene nutating disk meter with mechanical display to measure the quantity of fuel that has been dispensed
- › Designed to work in high flow refuelling applications where larger vehicle/machinery tanks are being filled
- › Benefitting from up to 33% less pressure drop than alternative models, maintaining as much as the pump's flow rate as possible
- › Robust aluminium body for durable wear in heavy duty environments
- › +/-1% accuracy after calibration
- › 4 digit resettable totaliser & 8 digit non-resettable totaliser
- › Working temperature -30°C/+60°C

Code	Description	Flow Rate (lpm)	Pressure (bar/psi)	Inlet	Outlet	Totaliser	Fluids
554A00	K150	25-150	3.5/51	1" F BSP	1" F BSP	0.1 to 9999.9 Resettable	D H&G



D DIESEL **W** WATER **WS** WINDSCREEN **HVO & GTL**

Piusi K24 Digital Flow Meter



5-120lpm

FLOW RATE RANGE

+/-1%

ACCURACY

- › Turbine meter with digital display to measure the fluid dispensed & provide user with flow rate indication
- › Aluminium version is bi-directional to allow flow to be counted either way
- › Can be installed inline or by the delivery nozzle & display can be rotated in 4 different positions for easy reading
- › Can work in gravity conditions as well as pump installations
- › +/-1% accuracy
- › 5 digit partial totaliser & 6 digit totaliser
- › Working temperature -10°C/+50°C
- › LCD display powered by two AAA batteries

Code	Description	Flow Rate (lpm)	Pressure (bar/psi)	Inlet	Outlet	Socket	Totaliser	Fluids
F00407330	K24 Diesel Plastic	5-120	10/145	1" M BSP	1" M BSP	✓	0.1 to 9999.9 Digit Totaliser x10, x100	D W WS H&G
F00408100	K24 Diesel Aluminium	7-120	20/300	1" F BSP	1" M BSP		0.1 to 9999.9 Digit Totaliser x10, x100	D H&G





Piusi Diesel Hose Reels

- › Automatic hose reels designed for low pressure diesel pumping systems including refuelling applications
- › Sturdy steel structure for heavy duty conditions
- › Protected latch mechanism to prevent injury to the hands
- › Reduced pressure loss through correct sizing of the hydraulics
- › Adjustable arm brackets for easy positioning
- › 1" model supplied with a choice of hose lengths

10m
MAX HOSE LENGTH

1"
HOSE SIZE

Code	Description	Hose Length (m)	Max Pressure (bar)	Inlet	Outlet	Pressure Loss (bar)	Fluids
F00750020	1" Hose Reel c/w 8m	8	10	1" F BSP Swivel	1" M BSP	0.6 @ 80lpm	D H&G
F00750030	1" Hose Reel c/w 10m	10	10	1" F BSP Swivel	1" M BSP	0.7 @ 80lpm	D H&G



30m
MAX HOSE LENGTH

1"
HOSE SIZE



High Capacity Diesel Hose Reels

- › Automatic spring rewind hose reel designed for low pressure diesel pump systems including refuelling applications
- › Thanks to the length of the hose they are ideal for where the vehicle being refuelled cannot easily reach the fuelling station
- › Anti-static hose c/w anti-kink spring at the nozzle end & hose stop
- › 4 roller guide to prolong hose life with adjustable arms
- › Sturdy steel structure can be wall, floor and ceiling mounted
- › 1" M BSP outlet for easy dispensing nozzle connection, which is uncommon on larger reels where conical fittings are often used

Code	Description	Hose Length (m)	Max Pressure (bar)	Inlet	Outlet	Whip Hose	Fluids
HRHC2515	1" Hose Reel c/w 15m	15	10	1" F BSP Swivel	1" M BSP		D H&G
HRHC2525CTS	1" Hose Reel c/w 25m	25	10	1" F BSP Swivel	1" M BSP	1m	D H&G
HRHC2530CTS	1" Hose Reel c/w 30m	30	10	1" F BSP Swivel	1" M BSP	1m	D H&G



Piusi Standard Auto Nozzle

- › Automatic nozzle for non-resale diesel refuelling of vehicles
- › Automatically shuts off when vehicle tank is full
- › 3 position stay open latch
- › Different flow rate versions to select from based upon required speed of dispensing
- › For pumping systems only
- › ATEX versions of the Auto 60 & Auto 140 available on request



140lpm
MAX FLOW RATE

Auto
TYPE



Code	Description	Flow Rate (lpm)	Max Pressure (bar)	Spout OD (mm)	Inlet Connection	Fluids
603060	Piusi Auto 60	10-63	3.5	24	1" F BSP Swivel	D H&G
604030	Piusi Auto 80	20-80	3.5	29	1" F BSP Swivel	D H&G
610020	Piusi Auto 120	20-120	3.5	29	1" F BSP Swivel	D H&G
610200	Piusi Auto 140	20-140	3.5	29	1" F BSP Swivel	D H&G



Piusi Self 2000 Manual Nozzle

- › Manual nozzle for diesel/oil dispensing in low & high flow rate conditions
- › Robust yet cost effective solution suitable for both pump & gravity systems
- › Die cast aluminium body c/w removable lever protection
- › Integral hook for hanging nozzle without a holster
- › Available with 1" F BSP Swivel or 1" Hose Tail



120lpm
MAX FLOW RATE

Manual
TYPE



Code	Description	Max Flow Rate (lpm)	Max Pressure (bar)	Spout OD (mm)	Seal Material	Inlet Connection	Fluids
641000	Piusi Self 2000 F Swivel	120	5	25	HNBR	1" F BSP Swivel	D O H&G
656000	Piusi Self 2000 Hose Tail	120	5	25	HNBR	1" Hose Tail	D O H&G



Piusi Self 3000 Manual Nozzle

- › Manual nozzle for diesel/oil dispensing at higher flow & pressure than the alternative Self 2000
- › Robust yet cost effective solution for both pump & gravity systems
- › Aluminium body with plastic anti-shock handle protector for added comfort when in use
- › Integral hook for hanging nozzle without a holster



150lpm
MAX FLOW RATE

Manual
TYPE



Code	Description	Max Flow Rate (lpm)	Max Pressure (bar)	Spout OD (mm)	Seal Material	Inlet Connection	Fluids
650000	Piusi Self 3000 F Swivel	150	10	25	HNBR	1" F BSP Swivel	D O H&G
65001A	Piusi Self 3000 F Swivel Unleaded	150	10	20	HNBR	1" F BSP Swivel	D O
65003A	Piusi Self 3000	150	10	20	HNBR	1" F BSP Swivel	D P K H&G



1 1/2" to 2"
SIZE

F BSP
CONNECTION



Brass Angle Check Valve

- › Brass non return valve for fitting to a pump's suction line to prevent line drainage and to keep the pump fully primed
- › Ensures the pressure from the fuel head is held back from the pump
- › F x F BSP threaded inlet/outlet
- › To choose correct spring pressure (psi) measure from the ground level to the top of the tank
- › 6ft= 3psi / 8ft=4psi / 10ft=4.5psi / 12ft=6psi

Code	Description	Inlet/Outlet	Body	Spring	Pressure (bar/psi)	Valve Seat	Fluids
OAB3134	1 1/2" Brass Angle Check Valve	1 1/2" F BSP	Brass			NBR	D O K W H&G
OAB3135	1 1/2" Brass Angle Check Valve	1 1/2" F BSP	Brass			Viton	D P O K W H&G
OAB3136	1 1/2" Brass Straight Check Valve	1 1/2" F BSP	Brass			Viton	D P O K W H&G
OAB3028	2" Brass Angle Check Valve	2" F BSP	Brass			NBR	D O K W H&G
OAB3025	2" Brass Angle Check Valve	2" F BSP	Brass			Viton	D P O K W H&G



1"
SIZE

F BSP
CONNECTION



Adjustable Pressure Relief Valve

- › Adjustable pressure relief valve designed for use with pumps that have no internal bypass valve
- › Commonly sold alongside engine driven pumps when the application requires a nozzle to be put on the end
- › Brass body construction
- › Working pressure is adjustable from 1 to 10 bar

Code	Description	Connection	Working Pressure (bar)	Body	Fluids
CTS125EDP	1" Adjustable Pressure Relief Valve	1" F BSP	1-10	Brass	D W B3 H&G



SUPPLYING QUALITY BRANDS INCLUDING:



OFFICIAL
DISTRIBUTOR



Weldcut Middle East FZE

PO Box 31291, Al Jazeera Al Hamra, Ras Al Khaimah, United Arab Emirates.

Telephone. 00971 6 740 3720

Mobile. 00971 50 9279371

Email. info@weldcutme.com | sales@weldcutme.com

Website. www.weldcutme.com

