

## Kit Contents

May look different for oil pump versions



### Tools required :

- 2 x 10 mm spanner
- 1 x 13 mm spanner
- 1 x 6 mm Hex Key
- 1 x Adjustable grips



## Assembly Instructions

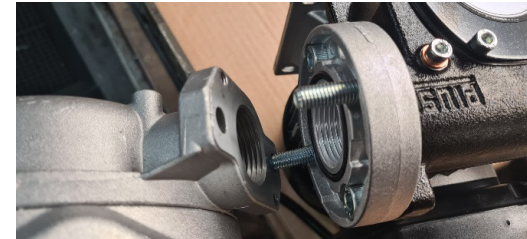
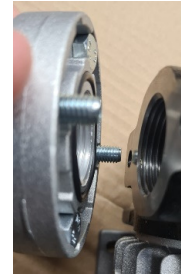
1: Remove the RED transport bungs from the pump head and discard.

2: Assemble the flange to the pump outlet ensuring M8 Bolts are back studded through at 90 degrees to the mounting bolts using the 6mm hex key.

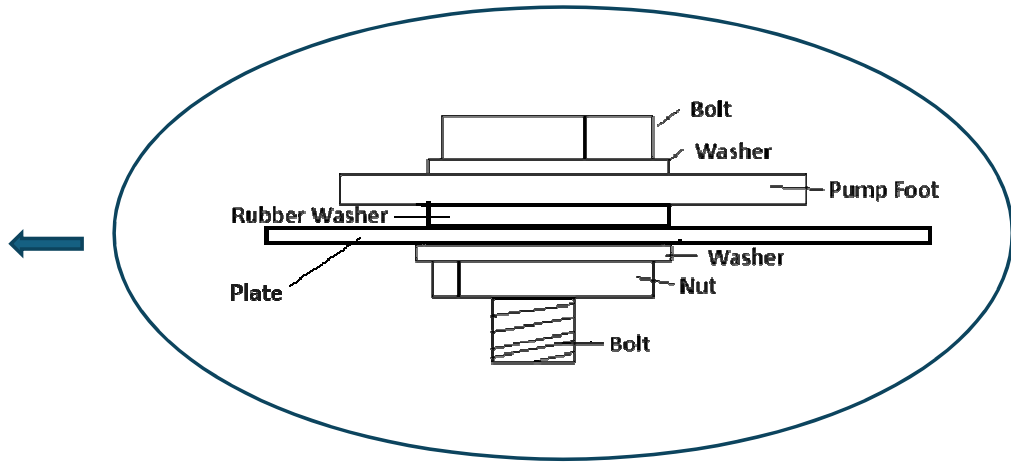
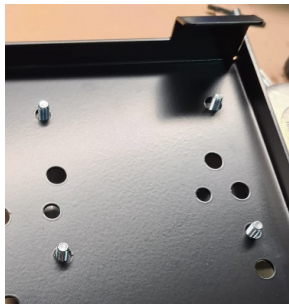
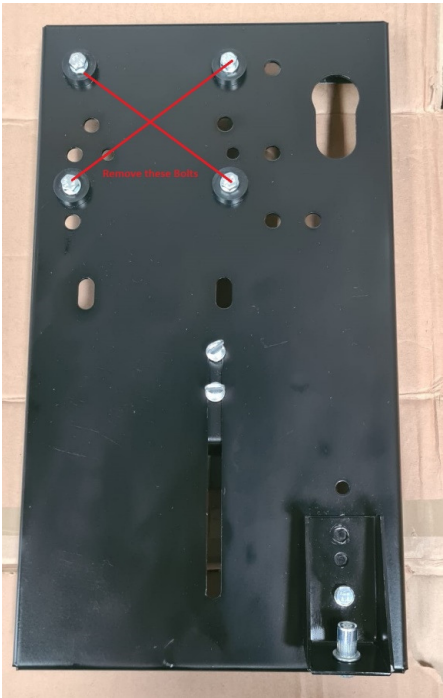
 Ensure the O-Ring stays in the flange groove and does not get pinched.

3: Connect the INLET of the flowmeter to the pump flange – check the rear of the flowmeter for direction of flow arrow – ensure O-Ring is in the flange groove.

4: Use a 13mm open spanner to tighten the M8 nuts to seal the assembly



5: Note the location of the pre-fitted pump bolts and rubber mounting feet.  
Remove these and re-fit to the pump feet and assemble onto the pump plate using the 10mm spanners.



6: Attach the articulated swivel elbow to the flowmeter outlet – using the brass hex part and grips

7: Attached chosen suction hose assembly to inlet of pump (not included with kit – must be purchased separately)

8: Fix to the IBC using the slotted locking plate to fit onto a metal bracket – different IBC's require different positions to affix.