

DATASHEET

CTS ADVANCED FUEL CONDITIONING UNIT



Product Specifications

Target ISO 14/13/11 with multi-pass filtration

Target ISO fuel cleanliness with multi-pass filtration, with lab tests showing water content removal to under 60ppm.

Two stage high performance filtration

Cim-Tek Ultimate Defense particle and water fuel filtration with a 10 micron filter and 2 micron final finishing filter.

Magnetic fuel conditioner

Breaks up bacteria growth and stuns diesel bug to prevent the contaminants getting to a size that will block up the filters.

Engineer & manual mode for complete control

Engineer log in required for system set up and to prevent tampering, and manual control to enable system priming.

Input for an alarm/gauge and leak probe

To detect a low level and leak in the drip tray (if installed). If activated, the pump will turn off until the issue is resolved.

Two passive BMS outputs for remote warnings

For remote warning of a filter block and low level/leak alarm to alert the user that action needs to be taken.

Automatically set system run times

Based on fuel tank size and runs between 9am-5pm, Mon-Fri to turn over 1.5 x the tank capacity per month.

Branding available with QR codes to your website

Control panel branding and customisable QR codes available to encourage replacement filter and pump sales with you.



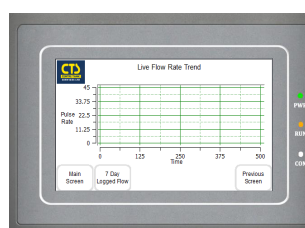
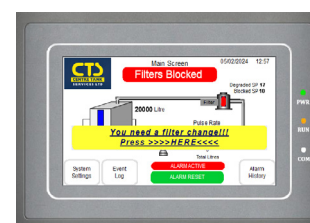
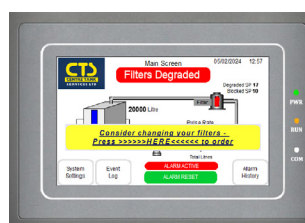
SCAN FOR PRODUCT VIDEO & MORE INFO



Operational Information on Touchscreen Display

A custom micro controller displaying:

- Filter degradation alert to warn that the filter will soon block to allow for pre-emptive replacement to take place
- Filter block alert to indicate filters need to be replaced before the system can resume operating
- Flow rate trend graphs providing filter life expectancy giving you an indication of how long they will last
- Event and alarm log for viewing historical activity such as pump started/stopped, engineer logged in/out, and low fuel level logged
- Pump schedule and time till next run cycle



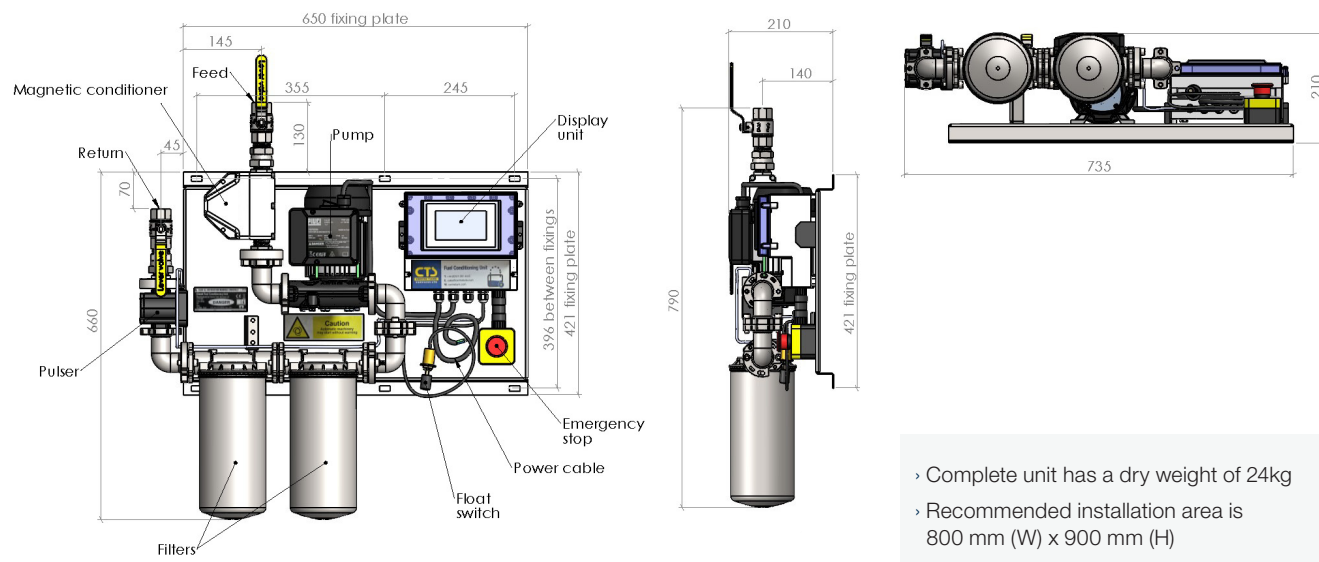
DATASHEET

CTS ADVANCED FUEL CONDITIONING UNIT



Product Weight & Dimensions

View (left to right): Front, side, underneath.



CTS Fuel Conditioner Range

Standard Advanced Fuel Conditioner

- Designed to obtain a target multi-pass ISO 14/13/11 level, with laboratory tests showing water content removal to under 60ppm. It has two-stage filtration using Cim-Tek Ultimate Defense high performance filters and a magnetic fuel conditioner.

Advanced Fuel Conditioner with Modbus

- With Modbus communication protocol output for connection with external building management systems.
- Can communicate the following statuses: Pump running, filter block, filter degraded, litres in tank (gauge version only), low level, leak.

Advanced Fuel Conditioner with Gauge

- With constant reading level gauge on the touchscreen display, showing tank contents by bar chart and in litres.
- Low level setting to shut off conditioner from operating until resolved, without the installation of an external gauge/alarm.

Advanced Fuel Conditioner with Gauge & Modbus

- Comes with both, as above.



Code	Description	Max Tank Capacity (l)	Max Turnover Per Day (l)	V	Gauge	Modbus	Micron	Fluids
CTS1080	Fuel Conditioning Unit	40,000 litres	3000 litres	230			10 & 2	D H&G
CTS1081	Fuel Conditioning Unit with Modbus	40,000 litres	3000 litres	230		✓	10 & 2	D H&G
CTS1082	Fuel Conditioning Unit with Gauge	40,000 litres	3000 litres	230	✓		10 & 2	D H&G
CTS1083	Fuel Conditioning Unit with Gauge & Modbus	40,000 litres	3000 litres	230	✓	✓	10 & 2	D H&G
R14862000	Replacement Water/Particle Element - 10µ						10	D H&G
CTH1851	Replacement Water/Particle Element - 2µ						2	D H&G
CTS1080FLT-KIT	Replacement Filter Kit	Includes: 10µ & 2µ Water/Particle Replacement Filter Elements					10 & 2	D H&G